



**PowerConnector Specialties, Inc**

SALES DIVISION OF TEYDESA CONECTORES, S.A.U.

**MECHANICAL CONNECTORS & CABLE LUGS**

A VETERAN OWNED SMALL BUSINESS



**Shear Bolt Connectors  
PRODUCT CATALOG  
2023-2024**



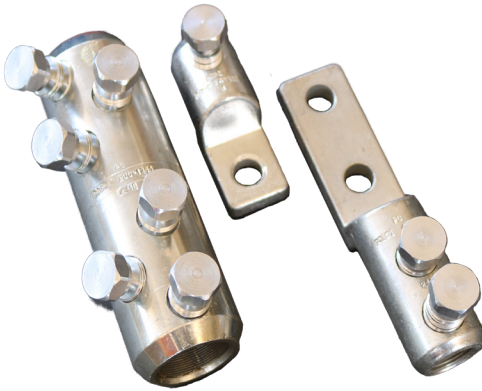
**GRESKO**

Phone: (877) 743-0622

Email: [pcs@gresco.com](mailto:pcs@gresco.com)

Website: [www.PowerConnectors.net](http://www.PowerConnectors.net)

# GENERAL CHARACTERISTICS



## General Description

These mechanical connectors with shear bolt head technology are designed for use in low and medium voltage applications. They can accommodate all cable sizes from #3 AWG to 1500kcmil with copper or aluminum conductors. These connectors help lower overall job cost and provide safe and easy installation. ANSI C119.4-2011/16 test and/or custom connector designs are available upon request.

## Shear Bolt Technology

Shear bolts are designed with predetermined shear points when the proper torque is reached and will ensure a good connection. After the head bolt shears off, the bolt should not protrude above connector body and leave any sharp edges. Filing is not required and bolts should not be removed. Only a  $\frac{3}{4}$ " HEX head six point deep impact socket and an 18 volt battery operated impact tool is required.



## Body

These connectors are made of high tensile strength aluminum alloy or copper. The bore entry of the connector has been chamfered for ease of conductor insertion. All straight connectors are multi range and all aluminum connectors come capped and can contain 20% neutral inhibitor inside of the bore upon request. The inside of the connector bore has threaded grooves for superior conductor contact and each straight connector incorporates a center stop barrier. Aluminum connectors have been highly tinned for maximum environmental protection.



## Centering Rings

Optional centering rings can be provided for the smallest conductor range of each connector upon request, but these are not necessary for proper connector performance.



Phone: (877) 743-0622

Website: [www.PowerConnectors.net](http://www.PowerConnectors.net)

Email: [pcs@gresco.com](mailto:pcs@gresco.com)



# SAVINGS AND BENEFITS

The following is a list of savings and benefits associated with the use of our shear bolt technology for Underground, Overhead and Substation type work.

1. No recorded injuries associated with the use of our shear bolt connectors technology to date.
2. It eliminates sprains and strains associated with the use of manually operated or heavy hydraulic or battery operated crimping tools which also require a multitude of different an expensive dies.
3. Reduces work effort and time involved with completing each installation
4. Our connectors only require a 3/4" six point deep well impact socket and an 18V Battery Impact Driver and are compatible with the use of Aluminum, Copper and PILC cables.
5. Our connectors eliminate the mistakes associated with the use of incorrect dies leading to crimp connectors premature failures.
6. Our connectors reduce the stock of crimp connectors previously carried on trucks as well as individual storerooms, all of our connectors can accept multiple conductor sizes.
7. All lines of our shear bolt connectors have been tested to ANSI C-119.4 2011/2016 standards and have passed such tests succesfully. Tests available upon request.
8. No electrical connector failures on over 400K installations.
9. Our connectors are compatible with all non-tension Overhead applications as well as all Underground applications such as PILC, Heat Shrink, Cold Shrink and Pre-molded type joints and terminations.
10. Our Aluminum connectors are highly tinned to prevent the effects of corrosion, no wire brushin of our lugs "pad/spade" is required.
11. All our Aluminum connectors come with 20% neutral inhibitor compatible with copper or aluminum and are RoHS (Restriction of Hazardous Substances) compliant.



For additional information contact:

# GRESKO

## GRESKO

Phone: (877) 743-0622

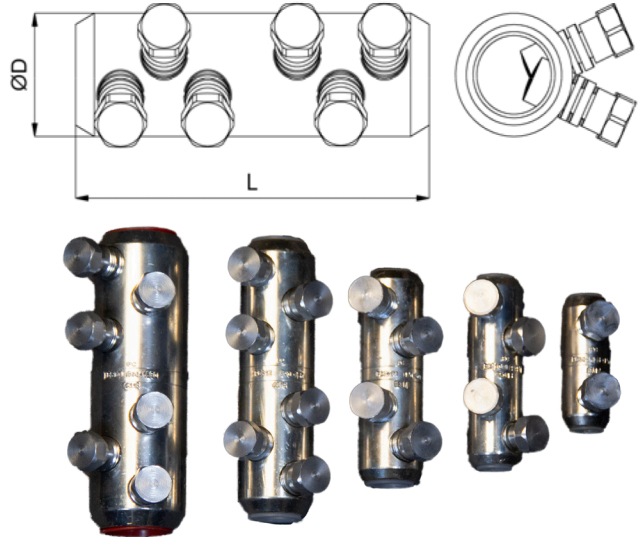
Website: [www.PowerConnectors.net](http://www.PowerConnectors.net)

Email: [pcs@gresco.com](mailto:pcs@gresco.com)



# STRAIGHT MECHANICAL SHEAR BOLT CONNECTORS

These are multi-range tin plated aluminum alloy straight connectors with a solid center barrier for both aluminum and copper conductors. These connectors are for use in low and medium voltage applications from #6 AWG up to 1500 Kcmil. These can be installed using tape, cold shrink or heat shrink splicing applications.



Reference	Section AWG/Kcmil	Bolts	OD	L	HEX Socket
PCS09	#6 AWG - 4/0 AWG 13 - 107 mm <sup>2</sup>	2	0.98" 25 mm	2.75" 70 mm	3/4" 19 mm
PCS09HS*	#6 AWG - 4/0 AWG 13 - 107 mm <sup>2</sup>	2	0.98" 25 mm	2.75" 70 mm	3/4" 19 mm
PCS10	#2 AWG - 250 Kcmil 34 - 127 mm <sup>2</sup>	4	1.18" 30 mm	3.94" 100 mm	3/4" 19 mm
PCS11	4/0 AWG - 500 Kcmil 107 - 253 mm <sup>2</sup>	4	1.38" 35 mm	4.37" 111 mm	3/4" 19 mm
PCS11M	350 - 500 Kcmil 177 - 253 mm <sup>2</sup>	4	1.38" 35 mm	4.37" 111 mm	3/4" 19 mm
PCS12	500 - 1000 Kcmil 253 - 507 mm <sup>2</sup>	6	1.97" 50 mm	6.10" 155 mm	3/4" 19 mm
PCS12M	1000 Kcmil 507 mm <sup>2</sup>	6	1.85" 47 mm	5.60" 142 mm	3/4" 19 mm
PCS13	4/0 AWG - 750 Kcmil 107 - 380 mm <sup>2</sup>	6	1.57" 40 mm	5.70" 145 mm	3/4" 19 mm
PCS14	750 - 1250 Kcmil 380 - 630 mm <sup>2</sup>	6	1.97" 50 mm	6.10" 155 mm	3/4" 19 mm
PCS15	1250 - 1500 Kcmil 630 - 800 mm <sup>2</sup>	8	2.16" 55 mm	7.48" 190 mm	3/4" 19 mm

\*HS connector includes heat shrink tube

## FEATURES

**Material:** Body: High tensile tin-plated aluminum alloy  
Bolts: High tensile strength aluminum alloy

**Voltage:** Up to 36 kV

**Tools:** 3/4" HEX (six point) **deep well** impact socket required.  
18V battery impact tool recommended



Phone: (877) 743-0622

Website: [www.PowerConnectors.net](http://www.PowerConnectors.net)

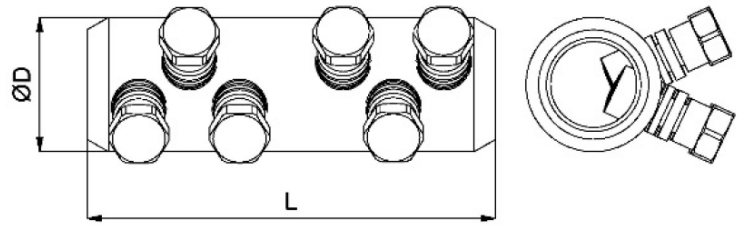
Email: [pcs@gresco.com](mailto:pcs@gresco.com)





# COPPER SHEAR BOLT CONNECTORS

These are copper alloy straight connectors that are intended to be used in low and medium voltage applications from #3 AWG up to 1000 Kcmil with **copper conductors only**. These can be installed using tape, cold shrink or heat shrink splicing applications.



Reference	Section AWG/MCM	Bolts	OD	L	HEX Socket
PCS09C*	#3 AWG - 4/0 AWG 27 - 107 mm <sup>2</sup>	2	0.98" 25 mm	2.75" 70 mm	3/4" 19 mm
PCS10C*	#2 AWG - 250 Kcmil 34 - 127 mm <sup>2</sup>	2	1.18" 30 mm	2.75" 70 mm	3/4" 19 mm
PCS11C*	4/0 AWG - 500 Kcmil 107 - 253 mm <sup>2</sup>	4	1.38" 35 mm	4.37" 111 mm	3/4" 19 mm
PCS15C*	4/0 AWG - 750 Kcmil 107 - 380 mm <sup>2</sup>	4	1.57" 40 mm	4.37" 111 mm	3/4" 19 mm
PCS15C-3C**	350 - 500 - 750 Kcmil 177 - 380 mm <sup>2</sup>	6	1.85" 47 mm	5.71" 145 mm	3/4" 19 mm
PCS12C	500 - 1000 Kcmil 253 - 507 mm <sup>2</sup>	6	1.97" 50 mm	6.10" 155 mm	3/4" 19 mm
PCS12MC	1000 Kcmil 507 mm <sup>2</sup>	8	1.85" 47 mm	5.60" 142 mm	3/4" 19 mm

\*Add 'HS' for connector + heat shrink tube kit

\*\*For Copper 1/C and 3/C PILC Round/Compact and Sector Cables

## FEATURES

**Material:** Body: Copper  
Bolts: Brass

**Voltage:** Up to 36 kV

**Tools:** 3/4" HEX (six point) **deep well** impact socket required.  
18V battery impact tool recommended



Phone: (877) 743-0622

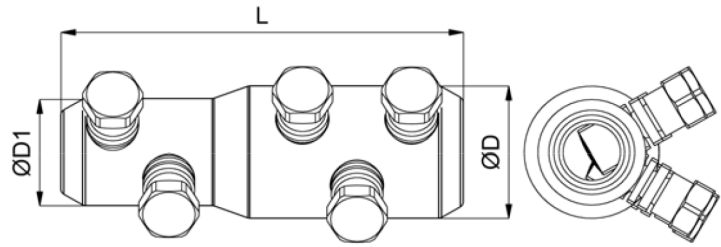
Website: [www.PowerConnectors.net](http://www.PowerConnectors.net)

Email: [pcs@gresco.com](mailto:pcs@gresco.com)



# STRAIGHT STEP MECHANICAL SHEAR BOLT CONNECTORS

These are multi-range tin plated aluminum alloy step connectors with a solid center barrier designed for both aluminum and copper conductors. These connectors are for use in low and medium voltage applications. These can be installed using tape, cold shrink or heat shrink splicing applications.



Reference	Section Side 1	Section Side 2	Bolts Side 1	Bolts Side 2	OD	OD1	L	HEX Socket
PCSS15	1/0 AWG - 500 Kcmil 53 - 253 mm <sup>2</sup>	500 - 1000 Kcmil 253 - 507 mm <sup>2</sup>	2	3	1.97" 50 mm	1.50" 38 mm	5.51" 140 mm	3/4" 19 mm
PCSS16	#2 AWG - 250 Kcmil 34 - 127 mm <sup>2</sup>	4/0 AWG - 500 Kcmil 107 - 253 mm <sup>2</sup>	2	2	1.38" 35 mm	1.18" 30 mm	4.33" 110 mm	3/4" 19 mm
PCSS17	1/0 AWG - 350 Kcmil 53 - 177 mm <sup>2</sup>	4/0 AWG - 750 Kcmil 107 - 380 mm <sup>2</sup>	2	3	1.57" 40 mm	1.38" 35 mm	5.31" 135 mm	3/4" 19 mm
PCSS18	4/0 AWG - 750 Kcmil 107 - 380 mm <sup>2</sup>	1000 - 1500 Kcmil 507 - 761 mm <sup>2</sup>	3	4	2.16" 55 mm	1.77" 45 mm	6.77" 172 mm	3/4" 19 mm

## FEATURES

**Material:** Body: High tensile tin-plated aluminum alloy  
Bolts: High tensile strength aluminum alloy

**Voltage:** Up to 36 kV

**Tools:** 3/4" HEX (six point) **deep well** impact socket required.  
18V battery impact tool recommended

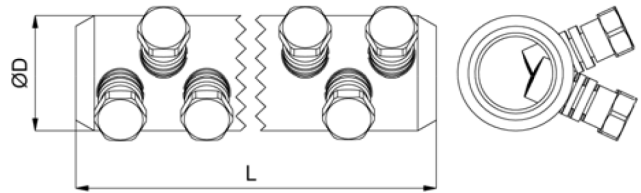
**GRESKO**

Phone: (877) 743-0622

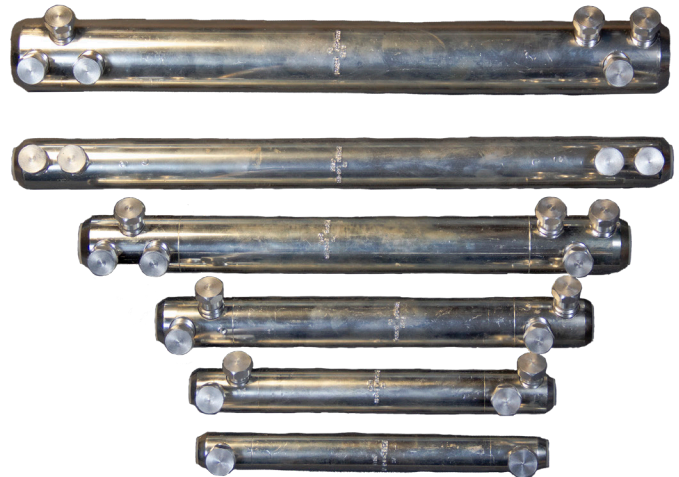
Website: [www.PowerConnectors.net](http://www.PowerConnectors.net)

**PCS**  
Email: [pcs@gresco.com](mailto:pcs@gresco.com)

# STRAIGHT REPAIR TYPE SHEAR BOLT CONNECTORS



These are multi-range tin plated aluminum alloy step connectors with a solid center barrier designed for both aluminum and copper conductors. These connectors are for use in low and medium voltage applications. These can be installed using tape, cold shrink or heat shrink repair splicing applications.



Reference	Section	Bolts	OD	L	HEX Socket
PCRS09	#6 AWG - 4/0 AWG 13 - 107 mm <sup>2</sup>	2	0.98" 25 mm	9.44" 240 mm	3/4" 19 mm
PCRS09HS*	#6 AWG - 4/0 AWG 13 - 107 mm <sup>2</sup>	2	0.98" 25 mm	9.44" 240 mm	3/4" 19 mm
PCRS18	#2 AWG - 250 Kcmil 34 - 127 mm <sup>2</sup>	4	1.18" 30 mm	9.76" 250 mm	3/4" 19 mm
PCRS19	4/0 AWG - 500 Kcmil 107 - 253 mm <sup>2</sup>	4	1.38" 35 mm	11.80" 300 mm	3/4" 19 mm
PCRS20	4/0 AWG - 750 Kcmil 107 - 380 mm <sup>2</sup>	6	1.57" 40 mm	15" 380 mm	3/4" 19 mm
PCRS21	500 - 1000 Kcmil 253 - 507 mm <sup>2</sup>	6	1.97" 50 mm	17.91" 455 mm	3/4" 19 mm
PCRS22	1/0 AWG - 350 Kcmil 53 - 177 mm <sup>2</sup>	4	1.38" 35 mm	17.91" 455 mm	3/4" 19 mm

\*HS connector includes heat shrink tube

## FEATURES

**Material:** Body: High tensile tin-plated aluminum alloy  
Bolts: High tensile strength aluminum alloy

**Voltage:** Up to 36 kV

**Tools:** 3/4" HEX (six point) **deep well** impact socket required.  
18V battery impact tool recommended

**GRESKO**

Phone: (877) 743-0622

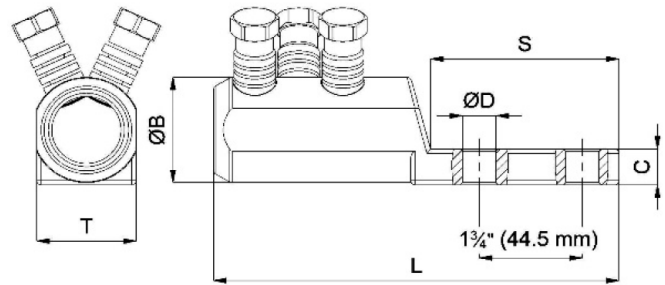
Website: [www.PowerConnectors.net](http://www.PowerConnectors.net)

Email: [pcs@gresco.com](mailto:pcs@gresco.com)



# MECHANICAL SHEAR BOLT LUGS

These are one piece tin plated aluminum alloy cable lugs designed for both aluminum and copper conductors from #6 AWG up to 1000 Kcmil. Approved for low and medium voltage applications on multiple NEMA spacing connections.



Reference	Section	Bolts	HEX Socket
PCL40	#6 AWG - 4/0 AWG 13 - 107 mm <sup>2</sup>	1	3/4" 19 mm

Reference	Section	Bolts	OB	S	C	T	L	OD	HEX Socket
PCL50	#3 AWG - 250 Kcmil 27 - 127 mm <sup>2</sup>	2	1.18" 30 mm	3.15" 80 mm	0.43" 11 mm	1.18" 30 mm	5.75" 146 mm	0.56" 14.3 mm	3/4" 19 mm
PCL51	4/0 AWG - 500 Kcmil 107 - 253 mm <sup>2</sup>	2	1.38" 35 mm	3.15" 80 mm	0.43" 11 mm	1.38" 35 mm	6.10" 155 mm	0.56" 14.3 mm	3/4" 19 mm
PCL52	500 - 1000 Kcmil 253 - 507 mm <sup>2</sup>	3	1.85" 47 mm	3.20" 81.4 mm	0.63" 16 mm	1.69" 43 mm	6.89" 175 mm	0.56" 14.3 mm	3/4" 19 mm
PCL53	350 - 750 Kcmil 177 - 380 mm <sup>2</sup>	3	1.85" 47 mm	3.20" 81.4 mm	0.63" 16 mm	1.69" 43 mm	6.89" 175 mm	0.56" 14.3 mm	3/4" 19 mm

## FEATURES

**Material:** Body: High tensile tin-plated aluminum alloy  
Bolts: High tensile strength aluminum alloy

**Voltage:** Up to 36 kV

**Tools:** 3/4" HEX (six point) **deep well** impact socket required.  
18V battery impact tool recommended

**GRESKO**

Phone: (877) 743-0622

Website: [www.PowerConnectors.net](http://www.PowerConnectors.net)

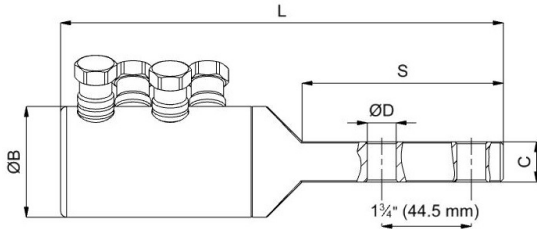
Email: [pcs@gresco.com](mailto:pcs@gresco.com)



# MECHANICAL SHEAR BOLT LUGS

These are one piece tinned aluminum alloy cable lugs designed for both aluminum and copper conductors from 750 up to 1250 Kcmil. Approved for low and medium voltage applications on multiple NEMA spacing connections

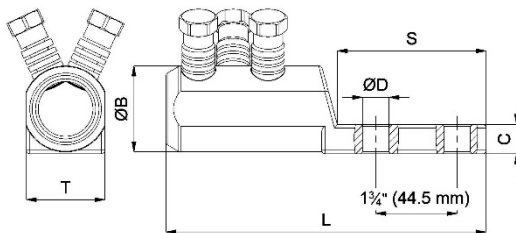
## With Center Pad/Spade



Reference	Section	Bolts	OB	S	C	L	OD	HEX Socket
PCLC55	750 - 1250 Kcmil 380 - 630 mm <sup>2</sup>	4	2.16" 55 mm	3.94" 100 mm	0.78" 20 mm	8.66" 220 mm	0.56" 14.33 mm	3/4" 19 mm

These are one piece tinned aluminum alloy cable lugs designed for both aluminum and copper conductors from 3/0 AWG up to 568 Kcmil. Approved for low and medium voltage applications on multiple NEMA spacing connections. Aerial application connectors with cables without mechanical tension

## For overhead lines



Reference	Section	Bolts	OB	S	C	T	L	OD	HEX Socket
PCLOH54	3/0 AWG - 568 Kcmil	3	1.85" 47 mm	3.20" 81.4 mm	0.63" 16 mm	1.69" 43 mm	6.89" 175 mm	0.56" 14.3 mm	3/4" 19 mm

## FEATURES

**Material:** Body: High tensile tin-plated aluminum alloy  
Bolts: High tensile strength aluminum alloy

**Voltage:** Up to 36 kV

**Tools:** 3/4" HEX (six point) deep well impact socket required.  
18V battery impact tool recommended

**GRESKO**

Phone: (877) 743-0622

Website: [www.PowerConnectors.net](http://www.PowerConnectors.net)

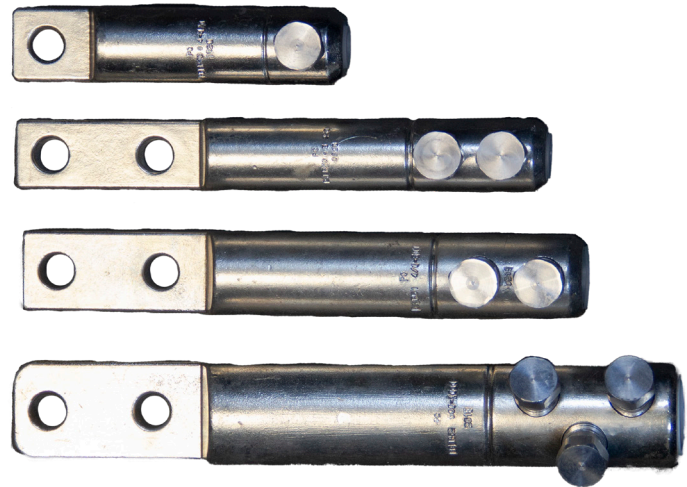
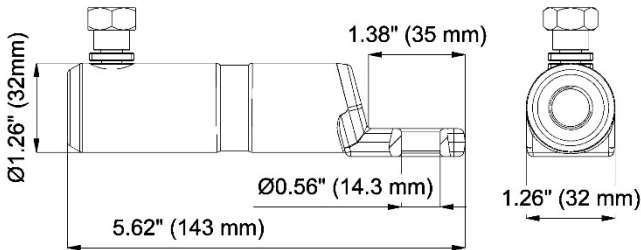
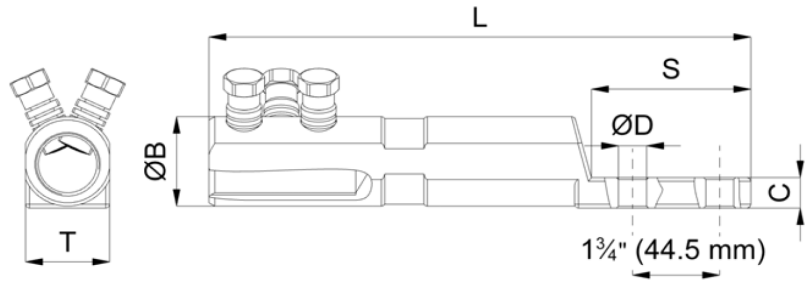
Email: [pcs@gresco.com](mailto:pcs@gresco.com)





# REPAIR MECHANICAL SHEAR BOLT LUGS

These are tin plated aluminum alloy cable lugs for repair or replacement of existing connections from #6 AWG up to 1000 Kcmil. Suitable for use on stranded Aluminum or Copper conductors. Approved for low and medium voltage applications on multiple NEMA spacing connections.



Reference	Section	Bolts	HEX Socket
PCLR40	#6 AWG - 4/0 AWG 13 - 107 mm <sup>2</sup>	1	3/4" 19 mm

Reference	Section	Bolts	OB	S	C	T	L	OD	HEX Socket
PCLR50	#3 AWG - 250 Kcmil 27 - 127 mm <sup>2</sup>	2	1.18" 30 mm	3.15" 80 mm	0.43" 11 mm	1.18" 30 mm	8.85" 225 mm	0.56" 14.3 mm	3/4" 19 mm
PCLR51	4/0 AWG - 500 Kcmil 107 - 253 mm <sup>2</sup>	2	1.38" 35 mm	3.15" 80 mm	0.43" 11 mm	1.38" 35 mm	9.25" 235 mm	0.56" 14.3 mm	3/4" 19 mm
PCLR52	500 - 1000 Kcmil 253 - 507 mm <sup>2</sup>	3	1.85" 47 mm	3.20" 81.4 mm	0.63" 16 mm	1.69" 43 mm	11" 279 mm	0.56" 14.3 mm	3/4" 19 mm

## FEATURES

**Material:** Body: High tensile tin-plated aluminum alloy  
Bolts: High tensile strength aluminum alloy

**Voltage:** Up to 36 kV

**Tools:** 3/4" HEX (six point) **deep well** impact socket required.  
18V battery impact tool recommended



Phone: (877) 743-0622

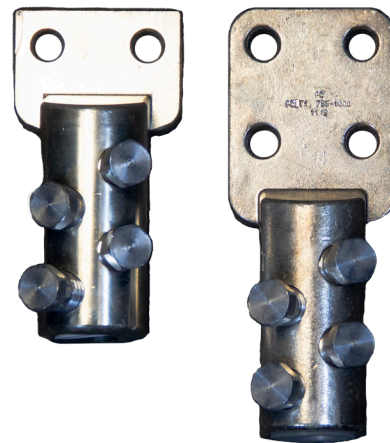
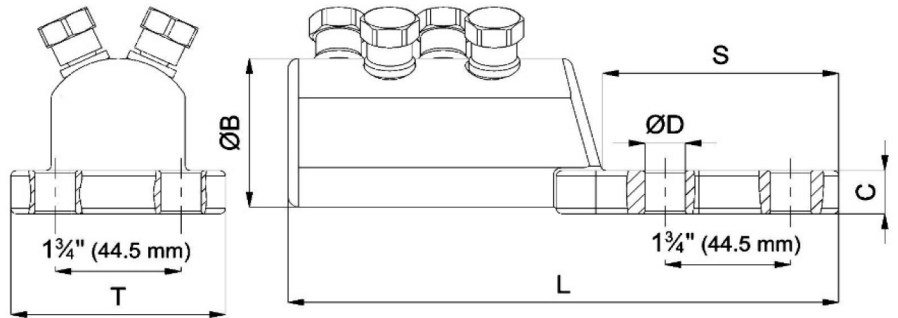
Website: [www.PowerConnectors.net](http://www.PowerConnectors.net)

Email: [pcs@gresco.com](mailto:pcs@gresco.com)



# MECHANICAL SHEAR BOLT LUGS

These are a one piece tinned aluminum alloy cable lugs designed for both aluminum and copper conductors of #2 up to 1500 Kcmil. Approved for low and medium voltage applications on multiple NEMA spacing connections.



Reference	Section	Bolts	OB	S	C	T	L	OD	Palm Holes	HEX Socket
PCLT1	750 - 795 - 954 - 1000 Kcmil	4	2.16" 55 mm	3.30" 84 mm	0.63" 16 mm	3.00" 76 mm	7.67" 195 mm	0.56" 14.3 mm	4	3/4" 19 mm
PCLT2	750 - 795 - 954 - 1000 Kcmil	4	2.16" 55 mm	1.57" 40 mm	0.63" 16 mm	3.00" 76 mm	5.90" 150 mm	0.56" 14.3 mm	2	3/4" 19 mm
PCLT3	#2 AWG - 500 Kcmil	3	1.57" 40 mm	3.30" 84 mm	0.63" 16 mm	3.00" 76 mm	6.45" 164 mm	0.56" 14.3 mm	4	3/4" 19 mm
PCLT4	1250 - 1500 Kcmil	4	2.16" 55 mm	3.30" 84 mm	0.63" 16 mm	3.00" 76 mm	7.67" 195 mm	0.56" 14.3 mm	4	3/4" 19 mm

## FEATURES

**Material:** Body: High tensile tin-plated aluminum alloy  
Bolts: High tensile strength aluminum alloy

**Voltage:** Up to 36 kV

**Tools:** 3/4" HEX (six point) **deep well** impact socket required.  
18V battery impact tool recommended



Phone: (877) 743-0622

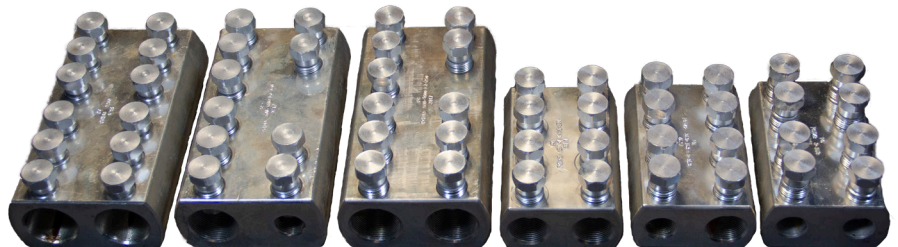
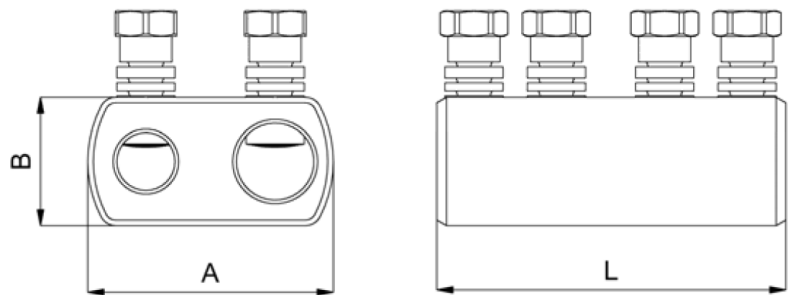
Website: [www.PowerConnectors.net](http://www.PowerConnectors.net)



Email: [pcs@gresco.com](mailto:pcs@gresco.com)

# MECHANICAL “H” SHEAR BOLT CONNECTORS

These are tinned aluminum alloy “H” connectors with a solid center barrier and are designed for both aluminum and copper conductors. They are designed for use in low and medium voltage applications from #3 AWG up to 1000 Kcmil. Allowing for additional taps when needed.



Reference	Main Section	Qty	Tap Section	Qty	A	B	L	HEX Socket
PCH40	#3 AWG - 350 Kcmil 27 - 177 mm <sup>2</sup>	4	#3 AWG - 350 Kcmil 27 - 177 mm <sup>2</sup>	0	3" 76 mm	1.57" 40 mm	4.25" 108 mm	3/4" 19 mm
PCH41	4/0 AWG - 750 Kcmil 107 - 380 mm <sup>2</sup>	2	4/0 AWG - 750 Kcmil 107 - 380 mm <sup>2</sup>	2	3" 76 mm	1.57" 40 mm	4.25" 108 mm	3/4" 19 mm
PCH42	4/0 AWG - 750 Kcmil 107 - 380 mm <sup>2</sup>	3	4/0 AWG - 750 Kcmil 107 - 380 mm <sup>2</sup>	1	3" 76 mm	1.57" 40 mm	4.25" 108 mm	3/4" 19 mm
PCH43	500 - 1000 Kcmil 253 - 507 mm <sup>2</sup>	3	#3 AWG - 350 Kcmil 27 - 177 mm <sup>2</sup>	1	3.74" 95 mm	1.85" 47 mm	6.30" 160 mm	3/4" 19 mm
PCH44	500 - 1000 Kcmil 253 - 507 mm <sup>2</sup>	2	500 - 1000 Kcmil 253 - 507 mm <sup>2</sup>	2	3.74" 95 mm	1.85" 47 mm	6.30" 160 mm	3/4" 19 mm
PCH45	500 - 1000 Kcmil 253 - 507 mm <sup>2</sup>	4	500 - 1000 Kcmil 253 - 507 mm <sup>2</sup>	0	3.74" 95 mm	1.85" 47 mm	6.30" 160 mm	3/4" 19 mm

Other sizes upon request

## FEATURES

**Material:** Body: High tensile tin-plated aluminum alloy  
Bolts: High tensile strength aluminum alloy

**Voltage:** Up to 36 kV

**Tools:** 3/4" HEX (six point) **deep well** impact socket required.  
18V battery impact tool recommended

**GRESKO**

Phone: (877) 743-0622

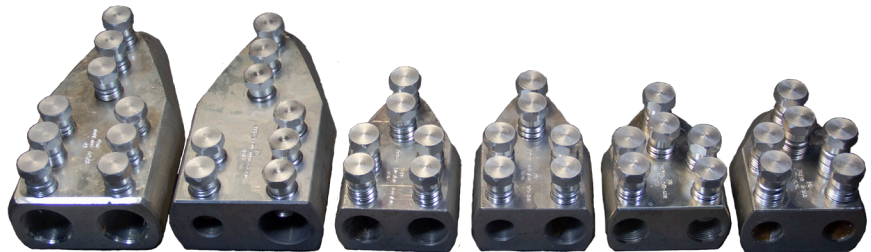
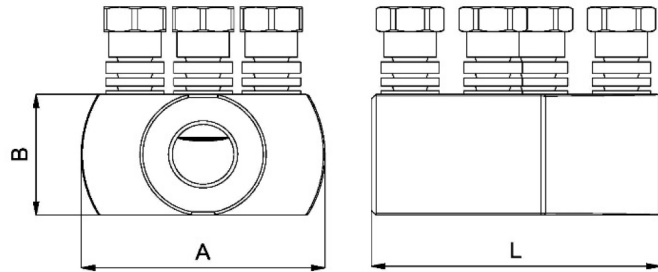
Website: [www.PowerConnectors.net](http://www.PowerConnectors.net)

Email: [pcs@gresco.com](mailto:pcs@gresco.com)



# MECHANICAL “Y” SHEAR BOLT CONNECTORS

These are tinned aluminium alloy “Y” type connectors with a solid center barrier are designed for both aluminium and copper conductors. They are designed for use in low and medium voltage applications from #3 AWG up to 1000 Kcmil. Allowing for one extra tap when needed.



Reference	Main Section	Qty	Tap Section	Qty	A	B	L	HEX Socket
PCY29	1/0 AWG 53 mm <sup>2</sup>	2	1/0 AWG 53 mm <sup>2</sup>	1	1.96" 50 mm	0.98" 25 mm	2.16" 55 mm	3/4" 19 mm
PCY30	#3 AWG - 350 Kcmil 27 - 177 mm <sup>2</sup>	2	#3 AWG - 350 Kcmil 27 - 177 mm <sup>2</sup>	1	3" 76 mm	1.57" 40 mm	3.50" 89 mm	3/4" 19 mm
PCY31*	4/0 AWG - 750 Kcmil 107 - 380 mm <sup>2</sup>	2	4/0 AWG - 750 Kcmil 107 - 380 mm <sup>2</sup>	1	3" 76 mm	1.57" 40 mm	4.10" 105 mm	3/4" 19 mm
PCY32	500 - 1000 Kcmil 253 - 507 mm <sup>2</sup>	2	500 - 1000 Kcmil 253 - 507 mm <sup>2</sup>	1	3.74" 95 mm	1.85" 47 mm	6.30" 160 mm	3/4" 19 mm
PCY33	1/0 AWG - 500 Kcmil 53 - 253 mm <sup>2</sup>	2	1/0 AWG - 500 Kcmil 53 - 253 mm <sup>2</sup>	1	3" 76 mm	1.57" 40 mm	3.50" 89 mm	3/4" 19 mm
PCY34*	4/0 AWG - 750 Kcmil 107 - 380 mm <sup>2</sup>	2	4/0 AWG - 750 Kcmil 107 - 380 mm <sup>2</sup>	1	3" 76 mm	1.57" 40 mm	4.10" 105 mm	3/4" 19 mm
PCY35	500 - 1000 Kcmil 253 - 507 mm <sup>2</sup>	2	500 - 1000 Kcmil 253 - 507 mm <sup>2</sup>	1	3.74" 95 mm	1.85" 47 mm	6.30" 160 mm	3/4" 19 mm

\*Accepts 750 Kcmil Low Voltage Cable  
Other sizes upon request

## FEATURES

**Material:** Body: High tensile tin-plated aluminum alloy  
Bolts: High tensile strength aluminum alloy

**Voltage:** Up to 36 kV

**Tools:** 3/4" HEX (six point) **deep well** impact socket required.  
18V battery impact tool recommended



Phone: (877) 743-0622

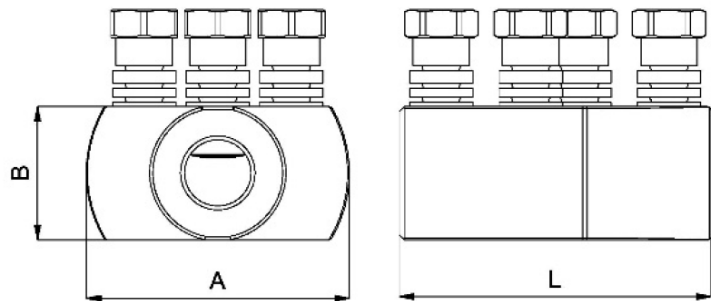
Website: [www.PowerConnectors.net](http://www.PowerConnectors.net)

Email: [pcs@gresco.com](mailto:pcs@gresco.com)



# COPPER SHEAR BOLT CONNECTORS

Copper alloy “Y” connectors designed for use in low and medium voltage applications from 1/C #3 AWG up to 750 Kcmil. Allowing for one extra tap for copper conductors only!



Reference	Main Section	Qty	Tap Section	Qty	A	B	L	HEX Socket
PCY30C	#3 AWG - 350 Kcmil 27 - 177 mm <sup>2</sup>	2	#3 AWG - 350 Kcmil 27 - 177 mm <sup>2</sup>	1	3" 76 mm	1.57" 40 mm	3.50" 89 mm	3/4" 19 mm
PCY31C	4/0 AWG - 750 Kcmil 107 - 380 mm <sup>2</sup>	2	1/0 AWG - 350 Kcmil 53 - 177 mm <sup>2</sup>	1	3" 76 mm	1.57" 40 mm	4.10" 105 mm	3/4" 19 mm
PCY34C	4/0 AWG - 750 Kcmil 107 - 380 mm <sup>2</sup>	2	4/0 AWG - 750 Kcmil 107 - 380 mm <sup>2</sup>	1	3" 76 mm	1.57" 40 mm	4.10" 105 mm	3/4" 19 mm

## FEATURES

**Material:** Body: Copper

Bolts: Brass

**Voltage:** Up to 36 kV

**Tools:** 3/4" HEX (six point) **deep well** impact socket required.  
18V battery impact tool recommended

**GRESKO**

Phone: (877) 743-0622

Website: [www.PowerConnectors.net](http://www.PowerConnectors.net)

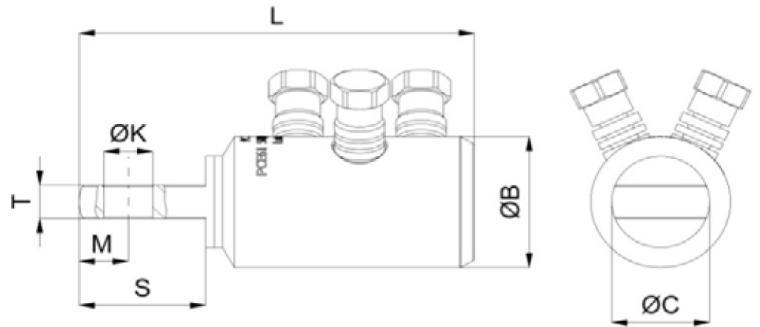
**PCS**

Email: [pcs@gresco.com](mailto:pcs@gresco.com)



# BIMETALLIC SHEAR BOLT CONNECTORS 600/900 AMP

These are Bi-metallic, aluminum alloy copper top connectors for both aluminium and copper conductors. They are for use on 600 Amp and 900 Amp "T" Body Elbow applications.



Reference	Section	Bolts	OB	M	OK	OC	S	T	L	HEX Socket
PCE61	500 - 1000 Kcmil 253 - 507 mm <sup>2</sup>	3	1.97" 50 mm	0.69" 17.5 mm	0.69" 17.5 mm	1.38" 35 mm	1.78" 45.2 mm	0.51" 13 mm	5.55" 141 mm	3/4" 19 mm
PCE63	1/0 AWG - 350 Kcmil 53 - 177 mm <sup>2</sup>	2	1.38" 35 mm	0.69" 17.5 mm	0.69" 17.5 mm	1.38" 35 mm	1.78" 45.2 mm	0.51" 13 mm	5.55" 141 mm	3/4" 19 mm
PCE64	4/0 - 500 - 750 Kcmil 107 - 253 - 380 mm <sup>2</sup>	3	1.57" 40 mm	0.69" 17.5 mm	0.69" 17.5 mm	1.38" 35 mm	1.78" 45.2 mm	0.51" 13 mm	6.53" 166 mm	3/4" 19 mm
PCE65	1250 - 1500 Kcmil 630 - 800 mm <sup>2</sup>	4	1.97" 50 mm	0.69" 17.5 mm	0.69" 17.5 mm	1.38" 35 mm	1.78" 45.2 mm	0.51" 13 mm	6.18" 157 mm	3/4" 19 mm
PCE61C*	500 - 1000 Kcmil 253 - 507 mm <sup>2</sup>	3	1.97" 50 mm	0.69" 17.5 mm	0.69" 17.5 mm	1.38" 35 mm	1.78" 45.2 mm	0.51" 13 mm	5.55" 141 mm	3/4" 19 mm

\*All copper alloy connector for copper conductors only!

## FEATURES

**Material:** Body: High tensile aluminum alloy  
Spade: Copper  
Bolts: High tensile strength aluminum alloy

**Voltage:** Up to 36 KV

**Tools:** 3/4" HEX (six point) deep well impact socket required.  
18V battery impact tool recommended



Phone: (877) 743-0622

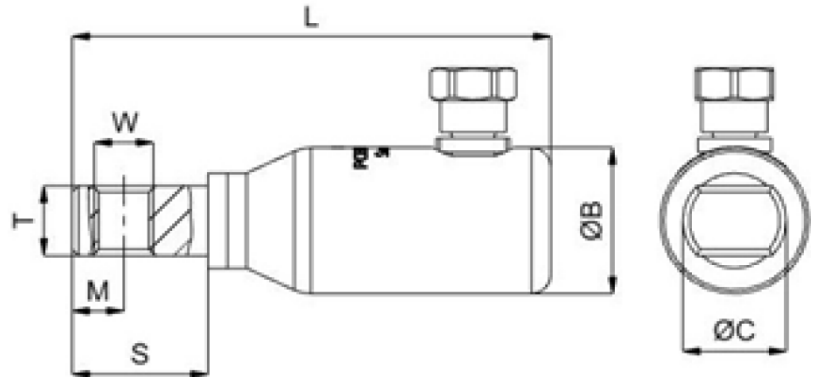
Website: [www.PowerConnectors.net](http://www.PowerConnectors.net)



Email: [pcs@gresco.com](mailto:pcs@gresco.com)

# BIMETALLIC SHEAR BOLT CONNECTORS 200 AMP

These are Bi-metallic, aluminum alloy and copper top connectors with shear bolt that has predetermined shear points and designed for both aluminum and copper conductors, to be used with 200 Amp loadbreak and non-loadbreak Elbows.



Reference	Section	Bolts	OB	M	OW	OC	S	T	L	HEX Socket
PCE60	#3 - 1/0 AWG 27 - 53 mm <sup>2</sup>	1	0.90" 23 mm	0.31" 8 mm	3/8"	0.63" 16 mm	0.85" 21.5 mm	0.43" 11 mm	2.90" 74 mm	3/4" 19 mm
PCE62	1/0 - 4/0 AWG 53 - 107 mm <sup>2</sup>	1	0.98" 25 mm	0.31" 8 mm	3/8"	0.63" 16 mm	0.85" 21.5 mm	0.43" 11 mm	2.90" 74 mm	3/4" 19 mm

## FEATURES

**Material:** Body: High tensile aluminum alloy  
Spade: Copper  
Bolts: High tensile strength aluminum alloy

**Voltage:** Up to 36 KV

**Tools:** 3/4" HEX (six point) **deep well** impact socket required.  
18V battery impact tool recommended



Phone: (877) 743-0622

Website: [www.PowerConnectors.net](http://www.PowerConnectors.net)

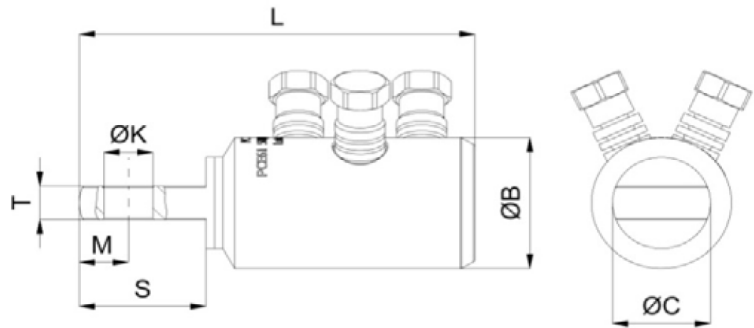


Email: [pcs@gresco.com](mailto:pcs@gresco.com)

# ALUMINUM SHEAR BOLT CONNECTORS 600 AMP

Aluminum Shear Bolt "T" Body Connectors Rated up to 600 Amp.

These are one piece tinned aluminum "T" body elbow connectors for both aluminum or copper conductors from #3 up to 1000 Kcmil.



Reference	Section	Bolts	OB	M	OK	OC	S	T	L	HEX Socket
PCA61	500 - 1000 Kcmil 253 - 507 mm <sup>2</sup>	3	1.97" 50 mm	0.69" 17.5 mm	0.69" 17.5 mm	1.38" 35 mm	1.78" 45.2 mm	0.50" 12.8 mm	5.55" 141 mm	3/4" 19 mm
PCA62	#3 AWG - 1/0 AWG 27 - 53 mm <sup>2</sup>	2	0.98" 25 mm	0.69" 17.5 mm	0.68" 17.5 mm	1.37" 35 mm	1.77" 45.2 mm	0.50" 12.8 mm	4.5" 114.3 mm	3/4" 19 mm
PCA63	1/0 AWG - 350 Kcmil 53 - 177 mm <sup>2</sup>	2	1.38" 35 mm	0.69" 17.5 mm	0.69" 17.5 mm	1.38" 35 mm	1.78" 45.2 mm	0.50" 12.8 mm	5.55" 141 mm	3/4" 19 mm
PCA64	4/0 - 500 - 750 Kcmil 107 - 253 - 380 mm <sup>2</sup>	3	1.57" 40 mm	0.69" 17.5 mm	0.69" 17.5 mm	1.38" 35 mm	1.78" 45.2 mm	0.50" 12.8 mm	6.53" 166 mm	3/4" 19 mm
PCA65	1250 - 1500 Kcmil 630 - 800 mm <sup>2</sup>	4	1.97" 50 mm	0.69" 17.5 mm	0.69" 17.5 mm	1.38" 35 mm	1.78" 45.2 mm	0.50" 12.8 mm	6.18" 157 mm	3/4" 19 mm

## FEATURES

**Material:** Body: High tensile tin-plated aluminum alloy  
Bolts: High tensile strength aluminum alloy

**Voltage:** Up to 36 kV

**Tools:** 3/4" HEX (six point) **deep well** impact socket required.  
18V battery impact tool recommended



Phone: (877) 743-0622

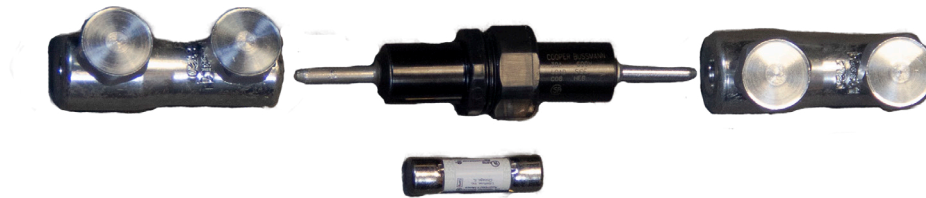
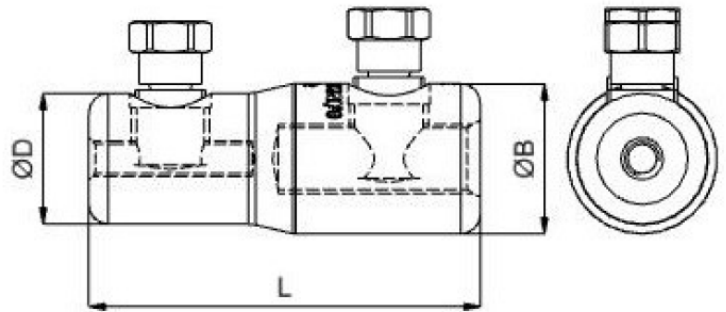
Website: [www.PowerConnectors.net](http://www.PowerConnectors.net)



Email: [pcs@gresco.com](mailto:pcs@gresco.com)

# STREET LIGHT CONNECTORS

This is a one piece tinned aluminum straight connector, that is designed for Street Light use on both copper or aluminum conductors from #12 AWG to 1/0 AWG 1/C and pin type in-line fuse holders.



Reference	Section	Bolts	OB	OD	L	HEX Socket
PCSLT1	#12 AWG - 1/0 AWG 3.30 - 53 mm <sup>2</sup>	2	0.90" 23 mm	0.78" 20 mm	2.36" 60 mm	3/4" 19 mm

## FEATURES

- Material:** Body: High tensile tin-plated aluminum alloy  
Bolts: High tensile strength aluminum alloy
- Voltage:** Up to 600 V
- Tools:** 3/4" HEX (six point) **deep well** impact socket required.  
18V battery impact tool recommended



Phone: (877) 743-0622

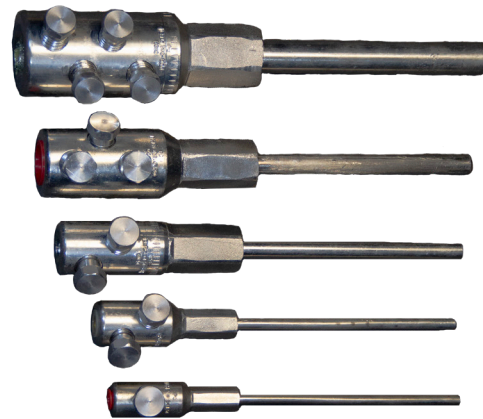
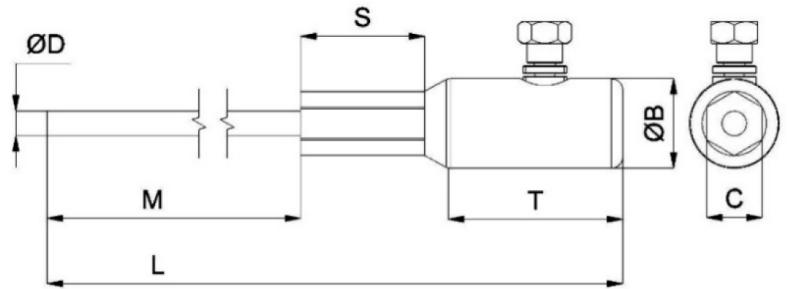
Website: [www.PowerConnectors.net](http://www.PowerConnectors.net)



Email: [pcs@gresco.com](mailto:pcs@gresco.com)

# STEM CONNECTORS

These are a one piece tinned aluminum body connector with a tinned copper stem, designed for low and medium voltage applications to be used on copper or aluminum conductors from #6 AWG to 1000 Kcmil.



These stem connectors “LOLLIPOP” type are for low and medium voltage terminations.

Reference	Section	Bolts	OB	S	C	T	M	L	OD	HEX Socket
PCSL1	#6 AWG - 1/0 AWG 13 - 53 mm <sup>2</sup>	1	0.90" 23 mm	1.26" 32 mm	0.57" 14.2 mm	1.75" 44.45 mm	6" 152 mm	9.75" 248 mm	0.24" 6 mm	3/4" 19 mm
PCSL1X	#6 AWG - 1/0 AWG 13 - 53 mm <sup>2</sup>	1	0.90" 23 mm	1.26" 32 mm	0.57" 14.2 mm	1.75" 44.45 mm	16" 406 mm	19.75" 502 mm	0.24" 6 mm	3/4" 19 mm
PCSL2	1/0 AWG - 4/0 AWG 53 - 107 mm <sup>2</sup>	2	1.18" 30 mm	1.37" 34.8 mm	0.66" 16.75 mm	1.96" 49.5 mm	6" 152 mm	10" 254 mm	0.32" 8 mm	3/4" 19 mm
PCSL3	4/0 AWG - 350 Kcmil 107 - 177 mm <sup>2</sup>	2	1.38" 35 mm	1.89" 48 mm	1.12" 28.5 mm	2.56" 65 mm	6" 152 mm	10.6" 270 mm	0.47" 12 mm	3/4" 19 mm
PCSL4	336.4 - 600 Kcmil	3	1.77" 45 mm	1.9" 48.2 mm	1.1" 28 mm	2.95" 74.9 mm	6" 152 mm	11.5" 292 mm	0.55" 14 mm	3/4" 19 mm
PCSL5	750 - 1000 Kcmil 380 - 507 mm <sup>2</sup>	4	2.16" 55 mm	2.16" 55 mm	1.50" 38 mm	3.90" 99 mm	6" 152 mm	12.3" 313 mm	0.87" 22 mm	3/4" 19 mm

## FEATURES

**Material:** Body: High tensile tin-plated aluminum alloy  
Bolts: High tensile strength aluminum alloy  
STEM: High tensile tin-plated Copper

**Voltage:** Up to 36 KV

**Tools:** 3/4" HEX (six point) **deep well** impact socket required.  
18V battery impact tool recommended



Phone: (877) 743-0622

Website: [www.PowerConnectors.net](http://www.PowerConnectors.net)

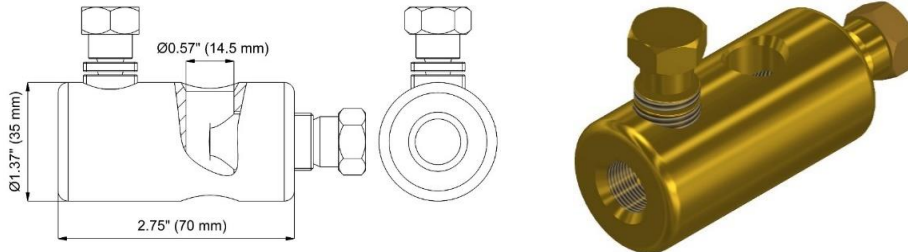
Email: [pcs@gresco.com](mailto:pcs@gresco.com)





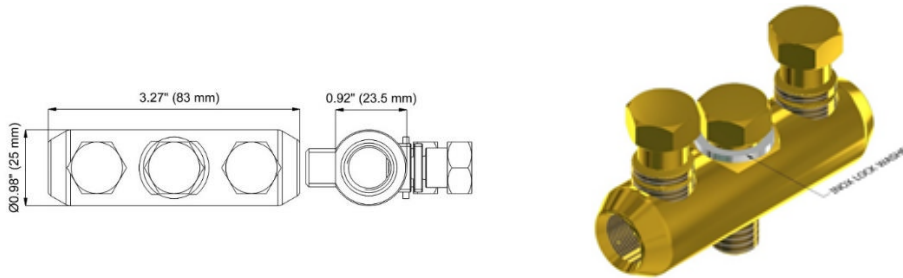
# PCS GROUNDING CONNECTORS

This is a brass ground rod connector designed for a 5/8" diameter copper weld ground rod connection with wire size ranging from 4/0 stranded copper conductor down to #6 soft or hard drawn solid copper wire.



Reference	Section	Bolts	HEX Socket
PCGR1	#6 AWG - 4/0 AWG 13-107 mm <sup>2</sup>	2	3/4" 19 mm

This is a multi range brass grounding connector for various types of transformers and switches that require grounding to a driven ground or vault type ring bond system which allows for conductor sizes from 4/0 stranded copper down to #6 soft or hard drawn solid copper wire. as well as Elbow(s) or other termination grounding.



Reference	Section	Bolts	HEX Socket
PCGT1	#6 AWG - 4/0 AWG 13-107 mm <sup>2</sup>	3	3/4" 19 mm

**FEATURES** **Material:** Body: Brass  
Bolts: Brass  
**Voltage:** Up to 36 kV

**Tools:** 3/4" HEX (six point) **deep well** impact socket required.  
18V battery impact tool recommended

**GRESKO**

Phone: (877) 743-0622

Website: [www.PowerConnectors.net](http://www.PowerConnectors.net)

Email: [pcs@gresco.com](mailto:pcs@gresco.com)



# INSTALLATION TOOLS

An 18V battery impact tool is recommended, and a  $\frac{3}{4}$  HEX (six point) **deep well** impact socket is recommended for installation of all shear bolts.



An 18V battery impact tool



$\frac{3}{4}$  HEX (six point) **deep well** impact socket



## GENERAL SHEAR BOLT CONNECTORS INSTALLATION INSTRUCTIONS



### **“Do Not Remove Bolts Prior To or During Connector Installation” “Do Not Wire Brush Spade on Lugs”**

Follow the same installation sequence for all types of PCS connectors.

1. Remove cable insulation equal to connector bore depths and insert conductor making sure it hits the connector bore stop.
2. Prepare exposed conductor by wire brushing and apply your company’s approved inhibitor.
3. Insert conductor into connector bore and hand tighten bolts making sure bolts make good tight contact with conductor.
4. Hold connector with glove hand and using a 3/4” six points deep impact socket and a 18V battery impact tool, tighten each bolt at least twice with the impact driver always starting with the outside bolt following the numerical sequence shown above and proceed to shear each bolt in the same sequence shown.

**Connector installation is now complete**



Phone: (877) 743-0622

Website: [www.PowerConnectors.net](http://www.PowerConnectors.net)

Email: [pcs@gresco.com](mailto:pcs@gresco.com)





## PowerConnector Specialties, Inc.

SALES DIVISION OF TEYDESA CONECTORES, S.A.U.

OFFICIAL STRATEGIC PARTNER

# GRESKO

**GRESKO**

Phone: (877) 743-0622

Website: [www.PowerConnectors.net](http://www.PowerConnectors.net)

Email: [pcs@gresco.com](mailto:pcs@gresco.com)

