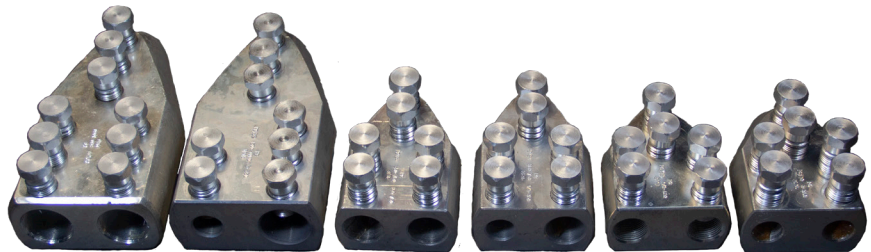
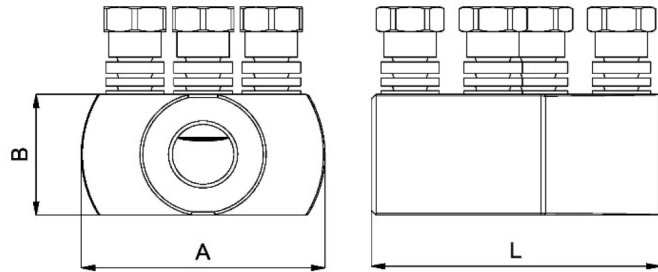


MECHANICAL “Y” SHEAR BOLT CONNECTORS

These are tinned aluminium alloy “Y” type connectors with a solid center barrier are designed for both aluminium and copper conductors. They are designed for use in low and medium voltage applications from #3 AWG up to 1000 Kcmil.



Reference	Main Section	Qty	Tap Section	Qty	A	B	L	HEX Socket
PCY29	1/0 AWG 53 mm ²	2	N/A	1	1.96" 50 mm	0.98" 25 mm	2.16" 55 mm	3/4" 19 mm
PCY30	#3 AWG - 350 Kcmil 27 - 177 mm ²	2	#3 AWG - 350 Kcmil 27 - 177 mm ²	1	3" 76 mm	1.57" 40 mm	3.50" 89 mm	3/4" 19 mm
PCY31*	4/0 AWG - 750 Kcmil 107 - 380 mm ²	2	#3 AWG - 350 Kcmil 27 - 177 mm ²	1	3" 76 mm	1.57" 40 mm	4.10" 105 mm	3/4" 19 mm
PCY32	500 - 1000 Kcmil 253 - 507 mm ²	2	#3 AWG - 350 Kcmil 27 - 177 mm ²	1	3.74" 95 mm	1.85" 47 mm	6.30" 160 mm	3/4" 19 mm
PCY33	1/0 AWG - 500 Kcmil 53 - 253 mm ²	2	1/0 AWG - 500 Kcmil 53 - 253 mm ²	1	3" 76 mm	1.57" 40 mm	3.50" 89 mm	3/4" 19 mm
PCY34*	4/0 AWG - 750 Kcmil 107 - 380 mm ²	2	4/0 AWG - 750 Kcmil 107 - 380 mm ²	1	3" 76 mm	1.57" 40 mm	4.10" 105 mm	3/4" 19 mm
PCY35	500 - 1000 Kcmil 253 - 507 mm ²	2	N/A	1	3.74" 95 mm	1.85" 47 mm	6.30" 160 mm	3/4" 19 mm

*Accepts 750 Kcmil Low Voltage Cable
Other sizes upon request

FEATURES

Material: Body: High tensile tin-plated aluminum alloy
Bolts: High tensile strength aluminum alloy

Voltage: Up to 36 kV

Tools: 3/4" HEX (six point) **deep well** impact socket required.
18V battery impact tool recommended

GRESKO

Phone: (877) 743-0622

Website: www.PowerConnectors.net

Email: pcs@gresco.com

