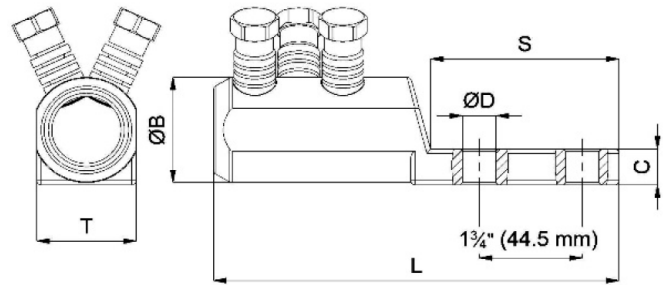


MECHANICAL SHEAR BOLT LUGS

These are one piece tin plated aluminum alloy cable lugs designed for both aluminum and copper conductors from #6 AWG up to 1000 Kcmil. Approved for low and medium voltage applications on multiple NEMA spacing connections.



Reference	Section	Bolts	HEX Socket
PCL40	#6 AWG - 4/0 AWG 13 - 107 mm ²	1	3/4" 19 mm

Reference	Section	Bolts	OB	S	C	T	L	OD	HEX Socket
PCL50	#3 AWG - 250 Kcmil 27 - 127 mm ²	2	1.18" 30 mm	3.15" 80 mm	0.43" 11 mm	1.18" 30 mm	5.75" 146 mm	0.56" 14.3 mm	3/4" 19 mm
PCL51	4/0 AWG - 500 Kcmil 107 - 253 mm ²	2	1.38" 35 mm	3.15" 80 mm	0.43" 11 mm	1.38" 35 mm	6.10" 155 mm	0.56" 14.3 mm	3/4" 19 mm
PCL52	500 - 1000 Kcmil 253 - 507 mm ²	3	1.85" 47 mm	3.20" 81.4 mm	0.63" 16 mm	1.69" 43 mm	6.89" 175 mm	0.56" 14.3 mm	3/4" 19 mm
PCL53	350 - 750 Kcmil 177 - 380 mm ²	3	1.85" 47 mm	3.20" 81.4 mm	0.63" 16 mm	1.69" 43 mm	6.89" 175 mm	0.56" 14.3 mm	3/4" 19 mm

FEATURES

Material: Body: High tensile tin-plated aluminum alloy
Bolts: High tensile strength aluminum alloy

Voltage: Up to 36 kV

Tools: 3/4" HEX (six point) deep well impact socket required.
18V battery impact tool recommended

GRESKO

Phone: (877) 743-0622

Website: www.PowerConnectors.net

Email: pcs@gresco.com

