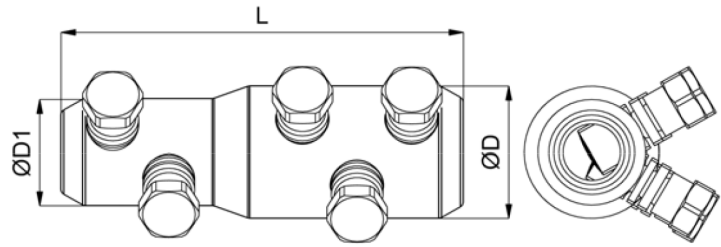


STRAIGHT STEP MECHANICAL SHEAR BOLT CONNECTORS

These are multi-range tin plated aluminum alloy step connectors with a solid center barrier designed for both aluminum and copper conductors. These connectors are for use in low and medium voltage applications. These can be installed using tape, cold shrink or heat shrink splicing applications.



Reference	Section Side 1	Section Side 2	Bolts Side 1	Bolts Side 2	OD	OD1	L	HEX Socket
PCSS15	1/0 AWG - 500 Kcmil 53 - 253 mm ²	500 - 1000 Kcmil 253 - 507 mm ²	2	3	1.97" 50 mm	1.50" 38 mm	5.51" 140 mm	3/4" 19 mm
PCSS16	#2 AWG - 250 Kcmil 34 - 127 mm ²	4/0 AWG - 500 Kcmil 107 - 253 mm ²	2	2	1.38" 35 mm	1.18" 30 mm	4.33" 110 mm	3/4" 19 mm
PCSS17	1/0 AWG - 350 Kcmil 53 - 177 mm ²	4/0 AWG - 750 Kcmil 107 - 380 mm ²	2	3	1.57" 40 mm	1.38" 35 mm	5.31" 135 mm	3/4" 19 mm
PCSS18	4/0 AWG - 750 Kcmil 107 - 380 mm ²	1000 - 1500 Kcmil 507 - 761 mm ²	3	4	2.16" 55 mm	1.77" 45 mm	6.77" 172 mm	3/4" 19 mm

FEATURES

Material: Body: High tensile tin-plated aluminum alloy
Bolts: High tensile strength aluminum alloy

Voltage: Up to 36 kV

Tools: 3/4" HEX (six point) **deep well** impact socket required.
18V battery impact tool recommended



Phone: (877) 743-0622

Website: www.PowerConnectors.net



Email: pcs@gresco.com