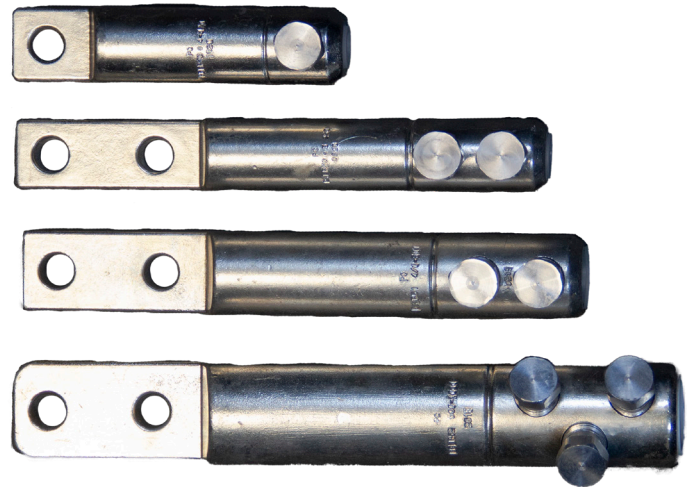
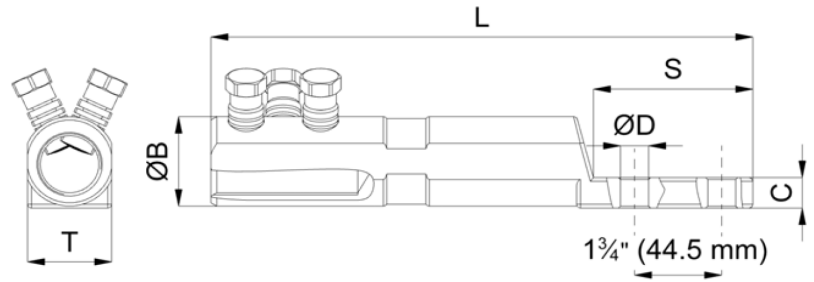


REPAIR MECHANICAL SHEAR BOLT LUGS

These are tin plated aluminum alloy cable lugs for repair or replacement of existing connections from #6 AWG up to 1000 Kcmil. Suitable for use on stranded Aluminum or Copper conductors. Approved for low and medium voltage applications on multiple NEMA spacing connections.



Reference	Section	Bolts	HEX Socket
PCLR40	#6 AWG - 4/0 AWG 13 - 107 mm ²	1	3/4" 19 mm

Reference	Section	Bolts	ØB	S	C	T	L	ØD	HEX Socket
PCLR50	#3 AWG - 250 Kcmil 27 - 127 mm ²	2	1.18" 30 mm	3.15" 80 mm	0.43" 11 mm	1.18" 30 mm	8.85" 225 mm	0.56" 14.3 mm	3/4" 19 mm
PCLR51	4/0 AWG - 500 Kcmil 107 - 253 mm ²	2	1.38" 35 mm	3.15" 80 mm	0.43" 11 mm	1.38" 35 mm	9.25" 235 mm	0.56" 14.3 mm	3/4" 19 mm
PCLR52	500 - 1000 Kcmil 253 - 507 mm ²	3	1.85" 47 mm	3.20" 81.4 mm	0.63" 16 mm	1.69" 43 mm	11" 279 mm	0.56" 14.3 mm	3/4" 19 mm

FEATURES

Material: Body: High tensile tin-plated aluminum alloy
Bolts: High tensile strength aluminum alloy

Voltage: Up to 36 kV

Tools: 3/4" HEX (six point) **deep well** impact socket required.
18V battery impact tool recommended



Phone: (877) 743-0622

Website: www.PowerConnectors.net

Email: pcs@gresco.com

