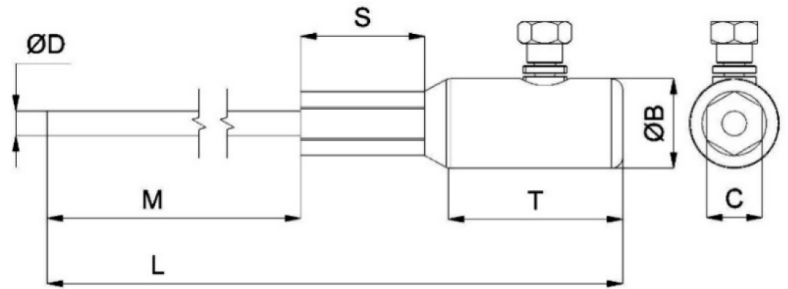


# STEM CONNECTORS

These are a one piece tinned aluminum body connector with a tinned copper stem, designed for low and medium voltage applications to be used on copper or aluminum conductors from #6 AWG to 1000 Kcmil.



These stem connectors “LOLLIPOP” type are for low and medium voltage terminations.

Reference	Section	Bolts	ØB	S	C	T	M	L	ØD	HEX Socket
PCSL1	#6 AWG - 1/0 AWG 13 - 53 mm <sup>2</sup>	1	0.90" 23 mm	1.26" 32 mm	0.57" 14.2 mm	1.75" 44.45 mm	6" 152 mm	9.75" 248 mm	0.24" 6 mm	3/4" 19 mm
PCSL1X	#6 AWG - 1/0 AWG 13 - 53 mm <sup>2</sup>	1	0.90" 23 mm	1.26" 32 mm	0.57" 14.2 mm	1.75" 44.45 mm	16" 406 mm	19.75" 502 mm	0.24" 6 mm	3/4" 19 mm
PCSL2	1/0 AWG - 4/0 AWG 53 - 107 mm <sup>2</sup>	2	1.18" 30 mm	1.37" 34.8 mm	0.66" 16.75 mm	1.96" 49.5 mm	6" 152 mm	10" 254 mm	0.32" 8 mm	3/4" 19 mm
PCSL3	4/0 AWG - 350 Kcmil 107 - 177 mm <sup>2</sup>	2	1.38" 35 mm	1.89" 48 mm	1.12" 28.5 mm	2.56" 65 mm	6" 152 mm	10.6" 270 mm	0.47" 12 mm	3/4" 19 mm
PCSL4	336.4 - 600 Kcmil	3	1.77" 45 mm	1.9" 48.2 mm	1.1" 28 mm	2.95" 74.9 mm	6" 152 mm	11.5" 292 mm	0.55" 14 mm	3/4" 19 mm
PCSL5	750 - 1000 Kcmil 380 - 507 mm <sup>2</sup>	4	2.16" 55 mm	2.16" 55 mm	1.50" 38 mm	3.90" 99 mm	6" 152 mm	12.3" 313 mm	0.87" 22 mm	3/4" 19 mm

## FEATURES

**Material:** Body: High tensile tin-plated aluminum alloy  
Bolts: High tensile strength aluminum alloy  
STEM: High tensile tin-plated Copper

**Voltage:** Up to 36 KV

**Tools:** 3/4" HEX (six point) **deep well** impact socket required.  
18V battery impact tool recommended



Phone: (877) 743-0622

Website: [www.PowerConnectors.net](http://www.PowerConnectors.net)

Email: [pcs@gresco.com](mailto:pcs@gresco.com)

