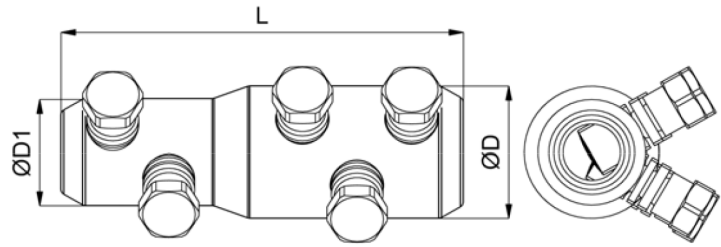


STRAIGHT STEP MECHANICAL SHEAR BOLT CONNECTORS

These are multi-range tin plated aluminum alloy step connectors with a solid center barrier designed for both aluminum and copper conductors. These connectors are for use in low and medium voltage applications.



Reference	Section Side 1	Section Side 2	Bolts Side 1	Bolts Side 2	ØD	ØD1	L	HEX Socket
PCSS15	1/0 AWG - 500 Kcmil 53 - 253 mm ²	500 - 1000 Kcmil 253 - 507 mm ²	2	3	1.97" 50 mm	1.50" 38 mm	5.51" 140 mm	3/4" 19 mm
PCSS16	#2 AWG - 250 Kcmil 34 - 127 mm ²	4/0 AWG - 500 Kcmil 107 - 253 mm ²	2	2	1.38" 35 mm	1.18" 30 mm	4.33" 110 mm	3/4" 19 mm
PCSS17	1/0 AWG - 350 Kcmil 53 - 177 mm ²	4/0 AWG - 750 Kcmil 107 - 380 mm ²	2	3	1.57" 40 mm	1.38" 35 mm	5.31" 135 mm	3/4" 19 mm

FEATURES

Material: Body: High tensile tin-plated aluminum alloy
Bolts: High tensile strength aluminum alloy

Voltage: Up to 36 kV

Tools: 3/4" HEX (six point) **deep well** impact socket required.
18V battery impact tool recommended



Phone: (877) 743-0622

Website: www.PowerConnectors.net



Email: pcs@gresco.com